

## LED Converter C25/300

### Type:

Electronic converter for the operation of light emitting diodes (LEDs) in series connection.

### Functional description:

- The input voltage (e.g. 230 V, 50 Hz) is rectified and smoothed by means of a capacitor.
- An additional electronic circuitry generates a constant output current for the LEDs.
- The output current is preset to 25 mA DC.
- The output voltage automatically adjusts to the respective load.

### Primary data:

230 V (+/-10 %), 50/60 Hz, max. 0.1 A

### Secondary data:

315 V (DC, max.), 25 mA (+/-5 %)

### Fuses:

Primary: 1 A embedded, non-replaceable melting fuse  
Secondary: non-replaceable fusing resistor

### Short-circuit / open-circuit protection:

The converters are short-circuit- and open-circuit-proof (no cut-off).

### Galvanic isolation:

The input and output are ***not*** galvanically isolated.

**Weight:** 0.11 kg

### Radio interference suppression:

According to VDE 0875, Part 2A1 (EN 55015)

### Temperatures:

Ambient temperature range: -25°C to +55°C

### Housing:

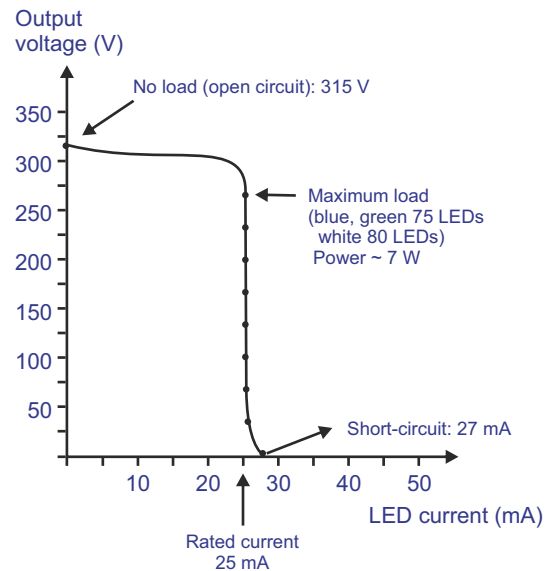
Hard PVC shell  
Fire protection class: B1  
Standard colour: white  
Sealing compound: polyurethane (black)

### Class of protection: II

### Degree of protection: IP 67

### Output characteristic C25/300

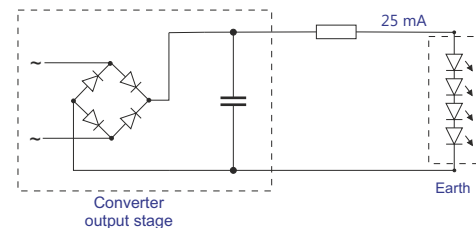
*(for white, blue, green LEDs)*



### Maximum loading with standard LEDs:

Blue, green 75 LEDs  
White 80 LEDs

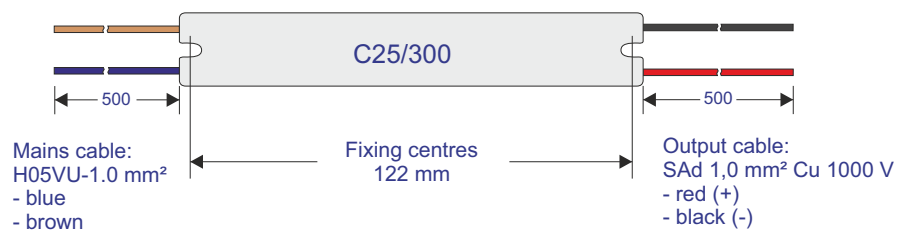
### Typical LED connection on the output side



### Housing dimensions



Housing colour: white



Technical modifications reserved. Content is protected by copyright.

January 2019 C25-300-e/01/2019