

LED Converter C25/350

Type:

Electronic converter for the operation of light emitting diodes (LEDs) in series connection.

Functional description:

- The input voltage (e.g. 230 V, 50 Hz) is rectified and smoothed by means of a capacitor.
- An additional electronic circuitry generates a constant output current for the LEDs.
- The output current is preset to 25 mA DC.
- The output voltage automatically adjusts to the respective load.

Primary data:

230 V (+/-20 %), 50/60 Hz, max. 0.11 A

Secondary data:

max. 360 V, 25 mA DC (+/-5 %)

Fuses:

Primary: 1 A embedded, non-replaceable melting fuse
Secondary: replaceable fusing resistor

Short-circuit / open-circuit protection:

The converters are short-circuit- and open-circuit-proof (no cut-off).

Galvanic isolation:

The input and output are galvanically isolated.

Weight: 0.22 kg

Radio interference suppression:

According to VDE 0875, Part 2A1 (EN 55015)

Temperatures:

Ambient temperature range: -25°C to +55°C

Housing:

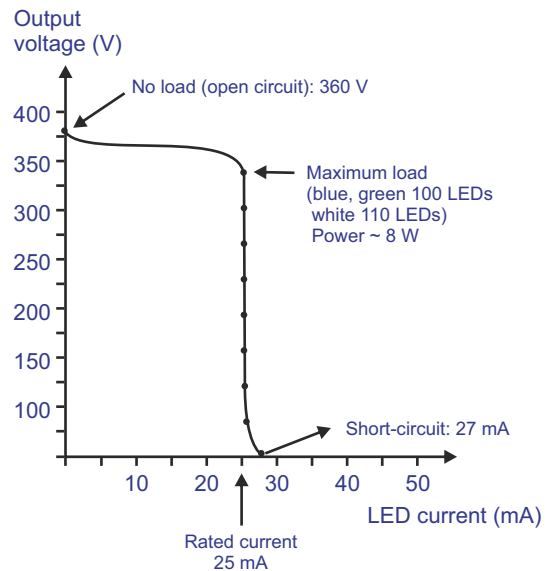
Hard PVC shell
Fire protection class: B1
Standard colour: white
Sealing compound: polyurethane (black)

Class of protection: I

Degree of protection: IP 67

Output characteristic C25/350

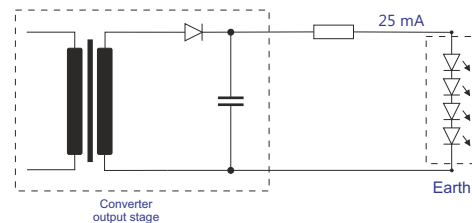
(for white, blue, green LEDs)



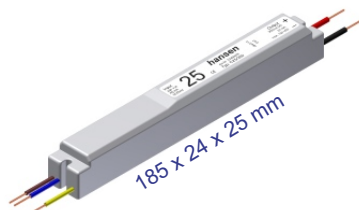
Maximum loading with standard LEDs:

Blue, green 100 LEDs
White 110 LEDs

Typical LED connection on the output side

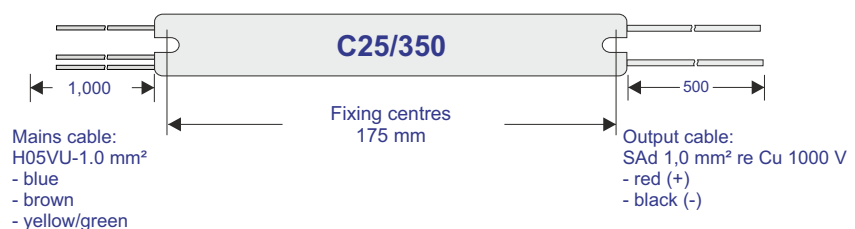


Housing dimensions



All dimensions in millimetres

Housing colour: white



Technical modifications reserved. Content is protected by copyright.

January 2019 C25-350-e/01/2019