

# LED Converter Type C750/30

**hansen**

**Type:**

Electronic converter for the operation of light emitting diodes (LEDs) in series connection.

**Functional description:**

- The input voltage (e.g. 230 V, 50 Hz) is rectified and smoothed by means of a capacitor.
- An additional electronic circuitry generates a constant output current for the LEDs.
- The output current is preset to 750 mA DC.
- The output voltage automatically adjusts to the respective load.

**Primary data:**

230 V (+/- 10 %), 50/60 Hz, max. 0.17 A

**Secondary data:**

C750/30: 30 V (DC, max.), 750 mA (+/- 5 %)

**Fuses:**

1 A embedded, non-replaceable melting fuse

**Short-circuit / open-circuit protection:**

The converters are short-circuit- and open-circuit-proof (no cut-off).

**Galvanic isolation:**

The input and output are galvanically isolated.

**Weight:** 0.27 kg

**Radio interference suppression:**

According to VDE 0875, Part 2A1 (EN 55015)

**Temperatures:**

Ambient temperature range: -25 to +65°C

**Housing:**

Hard PVC shell  
 Fire protection class: B1  
 Standard colour: white  
 Sealing compound: polyurethane (black)

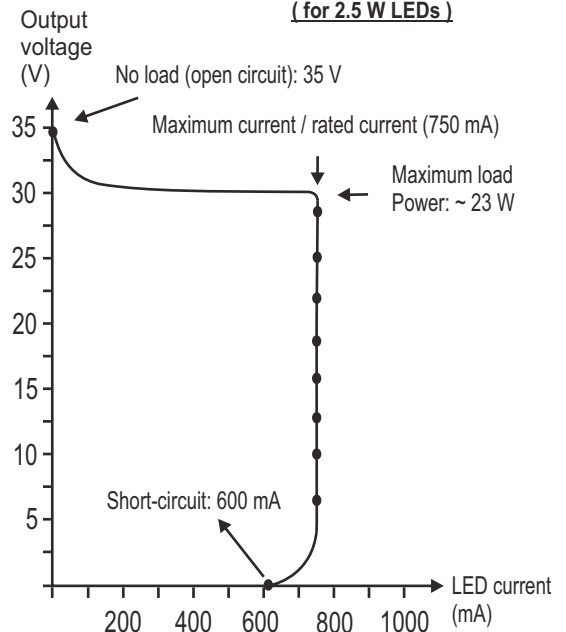
**Class of protection:** II



**Degree of protection:** IP 67

**Output characteristic C750/30**

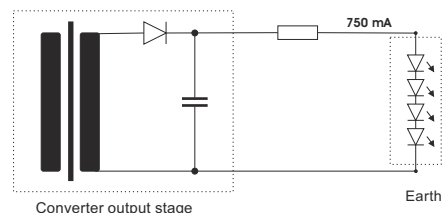
( for 2.5 W LEDs )



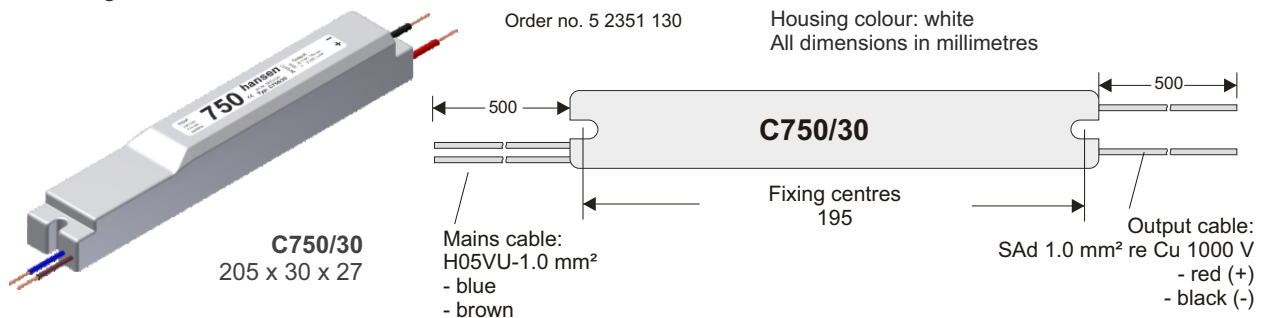
**Maximum loading with 2.5 W LEDs:**

- White, blue, green : 2 - 10 LEDs
- Red, yellow, amber : 2 - 13 LEDs

**Typical LED connection on the output side**



Housing dimensions:



Technical modifications reserved. Nov. 2012 Content is protected by copyright. Source: www.hansen-led.com C750-30/11/2012