

RGB/RGBW Control: Hand-held Transmitter 2819 – Data Sheet

hansen

Hand-held transmitter 2819

The **Transmitter 2819** is a radio transmitter with a transmission range of up to 30 m.

Together with a separate receiver (1009FA) it can be used to adjust the four light colours red, green blue and white either individually or in combination with each other. An automatic RGB colour cycle can be generated as well.

Using the coloured area in the middle of the device, the RGB light colours can be directly selected with the touch of a finger.

The light colour “white” has its own channel and can be switched individually or in combination with the RGB colours.

The keys 1 to 6 have a dual function:

- To define six zones with different light colours
- To store six light conditions

Illustration and dimensions



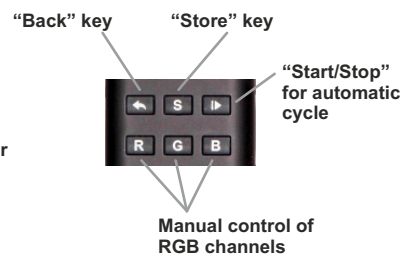
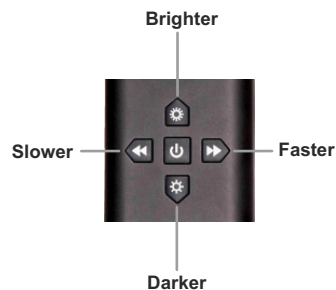
Suitable receiver: 1009FA



General data:

Transmission range	Up to 30 m
Supply voltage	4.5 V DC (3 x AAA battery)
Control signal	Radio (434 MHz/868 MHz)
Battery life	Approx. 2 years
Dimming range	0.1% to 100%

Description of the control keys



For a detailed description of the control keys please refer to the operating instruction.

Technical modifications reserved. February 2015 Content is protected by copyright. Source: www.hansen-led.com

RGB/RGBW Control: Wall-mount transmitter 2820-W – Data Sheet

hansen

Wall-mount transmitter 2820-W

The **Transmitter 2820-W** is a radio transmitter designed for installation into a standard flush-mount wall box.

Together with a separate receiver (1009FA) it can be used to adjust the four light colours red, green blue and white either individually or in combination with each other. An automatic RGB colour cycle can be generated as well.

Using the coloured area in the middle of the device, the RGB light colours can be directly selected with the touch of a finger.

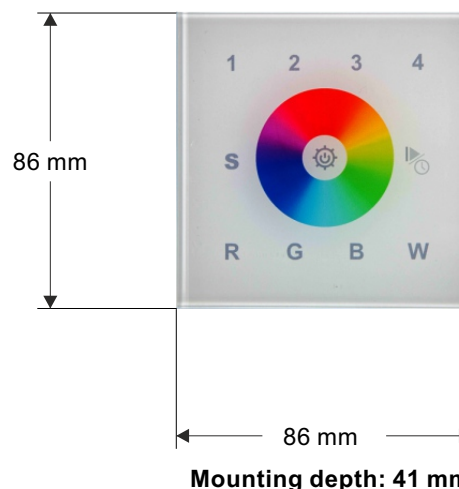
In addition, it can be used to switch the LED load on and off and dim its brightness

The keys 1 to 4 have a dual function:

- To define four zones with different light colours
- To store four light conditions

The controller is powered by an external DC voltage source (12–24 V).

Illustration and dimensions

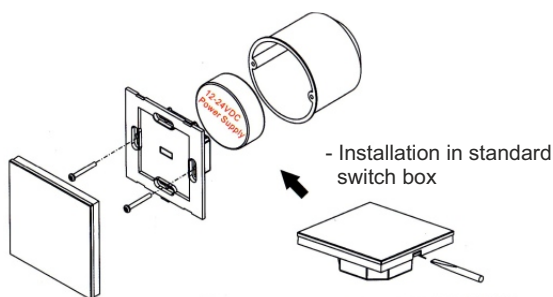


General data:

Transmission range	Up to 30 m
Supply voltage	12–24 V DC
Control signal	Radio (434 MHz/868 MHz)
Dimming range	0.1% to 100%

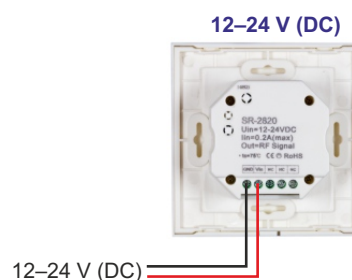
Installation into an existing flush-mount box

The receiver is installed into a standard flush-mount wall box. Here the connection to the mains voltage or the power supply unit is made.

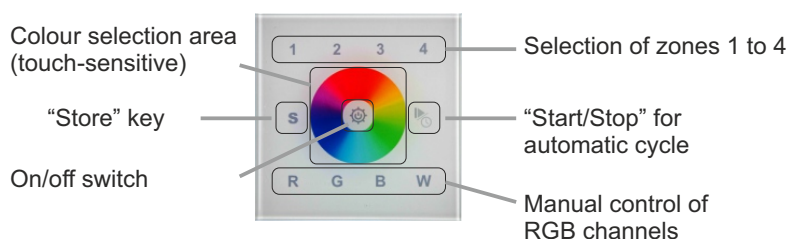


Connection to supply voltage

The transmitter requires an external supply voltage, in case of the 2820(DC) a DC voltage of 12–24 V.



Control keys



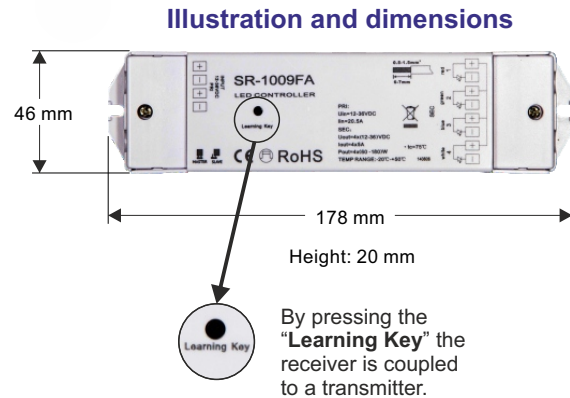
For a detailed description of the control keys please refer to the operating instruction.

Technical modifications reserved. February 2015 Content is protected by copyright. Source: www.hansen-led.com

Receiver 1009FA

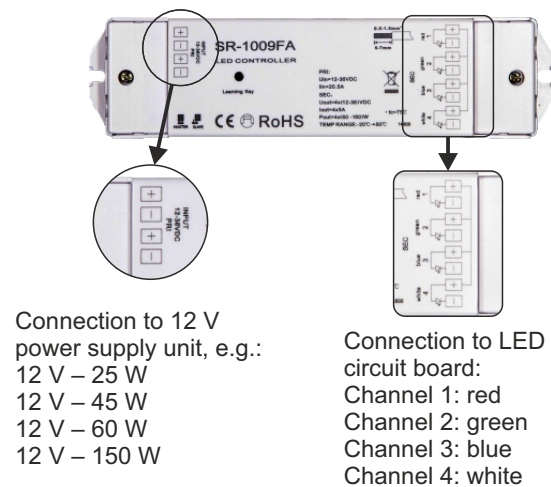
The **Receiver 1009FA** is a device which allows the dimming of three channels (RGB) or four channels (RGBW). The individual light colours can be adjusted freely, i.e. independent of the other colours.

In addition, an automatic colour cycle with adjustable speed and brightness can be selected.



General data:	
Type of connection	Parallel connection
Supply voltage	12–24 V DC
Control signal	Radio (434 MHz/868 MHz)
Number of channels	4
Max. LED current per channel	5 A
Max. LED power per channel	60 W
Dimming range	0.1% to 100%
Degree of protection	IP20
Ambient temperature range	-20 °C to +50 °C
Dimensions (L x W x H)	178 x 46 x 20 mm

Description of the connecting terminals



Operating instructions (short version)

- Connect the power supply unit and the LED circuit boards as illustrated in the connection diagram.
- The cross-section of the connecting cables (to the power supply unit on the input side and to the LED circuit boards on the output side) must be dimensioned for the respective current. An insufficient conductor cross-section will lead to overloading and may cause considerable damage.
- Briefly press the "Learning Key" on the receiver module 1009FA, then briefly press the button of the respective transmitter to pair the receiver and the transmitter. If the pairing has been successful, the connected LEDs will flash briefly.
- Pressing the "Learning Key" for longer than 5 seconds will reset the receiver to its factory setting.
- Master/slave function
Using the jumper switch on the input side, the receiver can be switched from master to slave operation.
Contacts bridged: receiver is master; contacts open: receiver is slave.

General information:

- Each receiver can be controlled by up to 8 transmitters.
- One transmitter can control any number of receivers.
- The voltage supply must have a power reserve of 20% with regard to the connected LED load.
- The receiver 1009FA can be controlled with the following transmitters:
 - 2819
 - 2820-W

Technical modifications reserved. February 2015 Content is protected by copyright. Source: www.hansen-led.com