

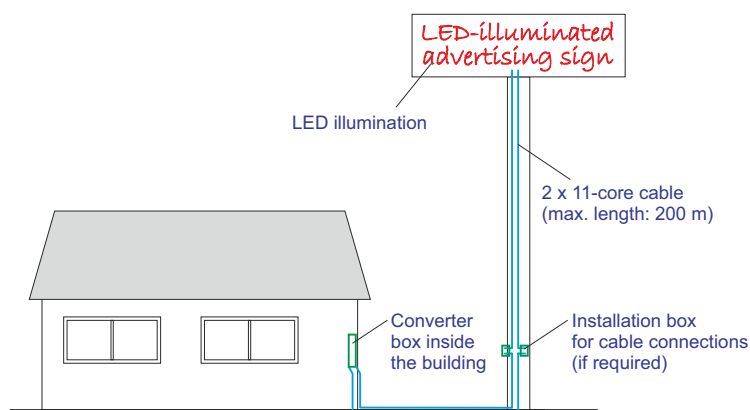
## Description

### Converter Box, 10-bay

The converter box is a protective housing for power supply units, especially for LED converters. It allows converters, mains filters, dimmers and the associated cable connections to the series-connected LEDs (LED Tube) to be professionally installed and housed.

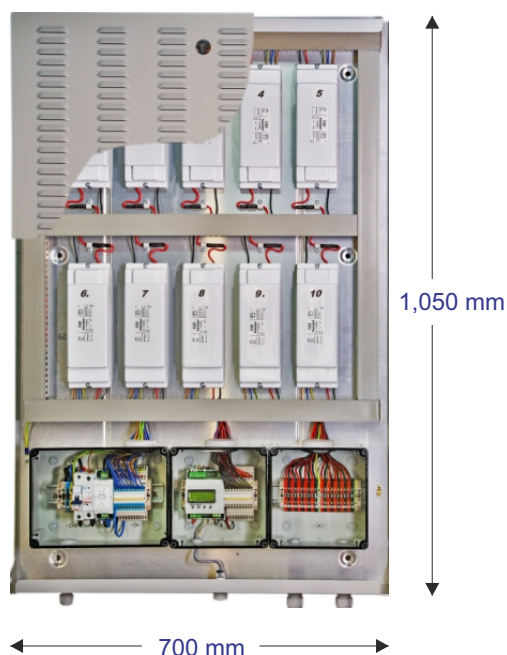
The converter box was specially designed for large, professionally built illuminated advertising installations and allows the converters to be accommodated outside the illuminated body (channel letters or light box).

The drawing below shows the example of an LED-illuminated pole-mounted advertising sign. The converters are installed in the box inside the adjacent building and connected to the LEDs by means of two special 11-core cables. The maximum allowable distance between the illuminated sign and the converter box is 200 m.



When fully equipped with ten C100/990 converters, up to 3,000 LEDs can be operated with one converter box and two connection cables.

**This corresponds to an illuminated area of approx. 60 m<sup>2</sup>**  
(using Power-2x100 LEDs, spaced at 200 mm intervals with an overall sign depth of 300 mm).



The converter box can be equipped with both dimmable and non-dimmable converters.

#### Technical data:

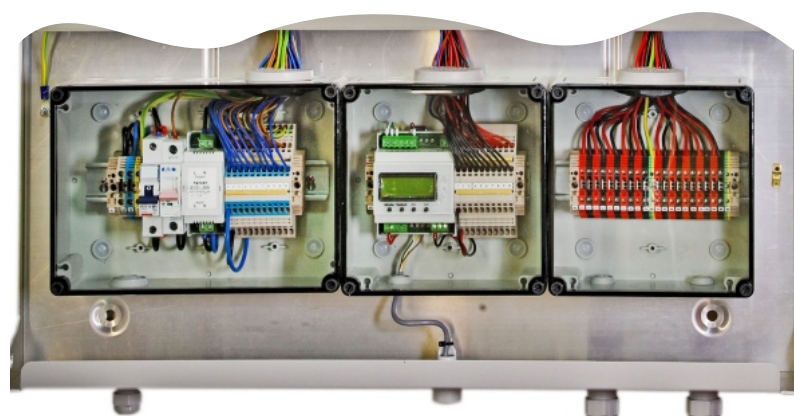
Width:	700 mm
Height:	1,050 mm
Depth:	100 mm
Weight (empty):	10 kg
Material:	Aluminium sheet

Order no. (empty): 5 000 7000

#### IP 54

#### Cable junction boxes for:

- Mains connection incl. miniature circuit breakers, etc.
- Controller (optionally light-dependent)
- Converter/LED connection



Technical modifications reserved. Content is protected by copyright.

February 2019 L123b/02/2019